



Soluna™ Roller Shades

Fabric Expectations

Roller shades have been a go-to window treatment solution for decades. Advancements in fabrics, operating systems and options have taken roller shades to the next level.

Their sleek, modern appearance have made them the current top selling window treatment.



Our Soluna™ Roller Shades have introduced several award-winning features designed to enhance your roller shade experience:

- Smooth operating, trouble-free PrecisionLift™ cordless system
- Light blocking Light Guard system
- Environmentally friendly 100% polyester solar screens

There are certain inherent characteristics of Soluna™ Roller Shades that can be found in any roller shade in the market. Since we always strive to provide the highest quality window treatment solutions, we are communicating these industry-wide operating and fabric characteristics.

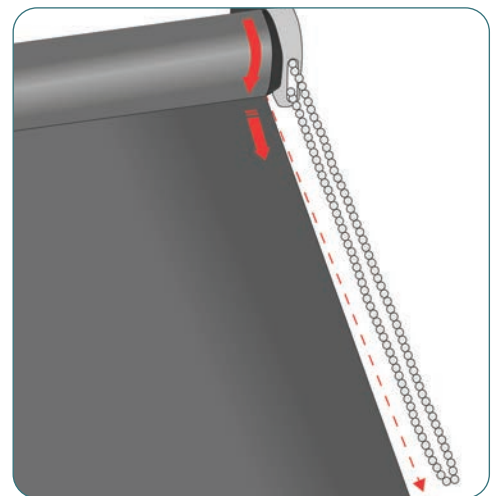
SIDE LIGHT GAPS

All roller shades have side light gaps because the shade fabric is not as wide as the tube it rolls up onto to accommodate the mounting brackets. If total privacy or room darkness is desired, these gaps have to be considered. Our Light Guard system hides these gaps to decrease penetrating light. For the ultimate room-darkening solution, choose our LightGuard 360™ system with integrated side, top and bottom channels.



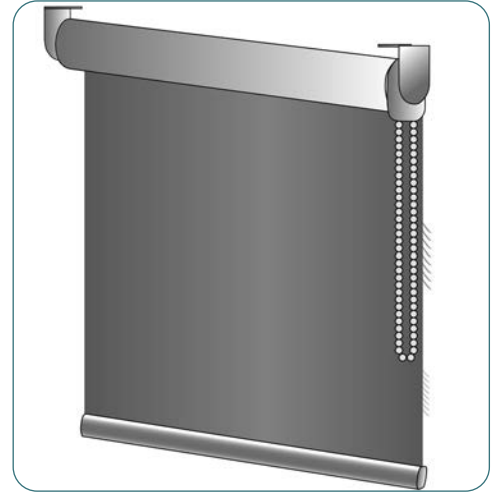
TELESCOPING OR TRACKING

- Occurs when the fabric does not roll up straight onto the roller tube.
- May cause fabric fraying as a result of continual contact with the clutch.
- Often caused because the shade is not level.
- Can usually be corrected by re-leveling the shade.



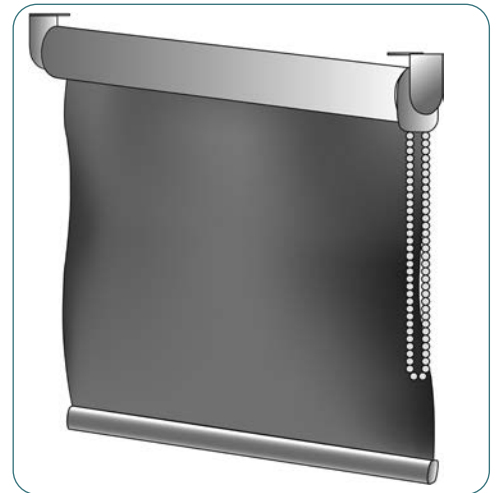
FABRIC FRAYING

- Often a natural occurrence associated with certain fabrics.
- May be caused by continual contact with the operating clutch (see telescoping above).
- Can normally be trimmed with scissors.



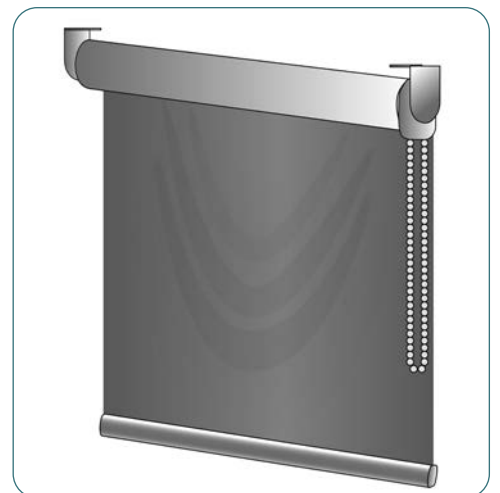
CURLING OR CUPPING

- Fabric edges occasionally may curl. This occurs due to the weight of the fabric and should be considered a normal characteristic.
- Fabric panel will often appear taut at the top, near the tube and at the bottom, towards the hem bar.
- Curling is more noticeable in the middle of the shade.
- May be avoided by splitting the shade into two separate shades.



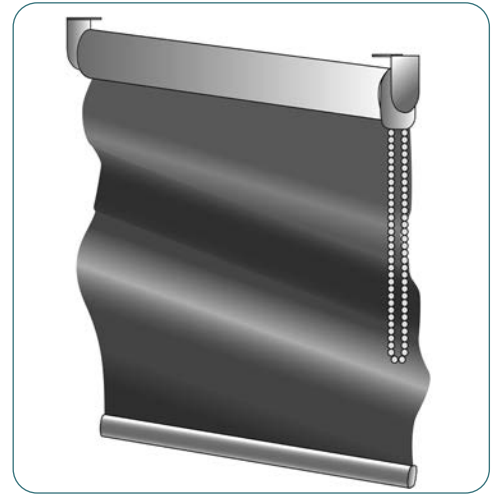
DEFLECTION

- Shows up as V pattern in the middle of the shade fabric.
- Occurs when the shade is in a raised position for a long period of time.
- For wider shades with heavier fabrics, the metal tube may sag over time. As a result, deflection may be more pronounced.



FABRIC RIPPLING OR WAVING

- Vertical or diagonal ripples in the fabric.
- May be a result of minor imperfections of fabric weaving or that the shade is not rolled properly.
- May be avoided by splitting the shade into two separate shades.



FABRIC TWISTING

- Fabric may twist vertically when the shade is long and narrow.
- This is considered normal and is not a manufacturing defect.

